

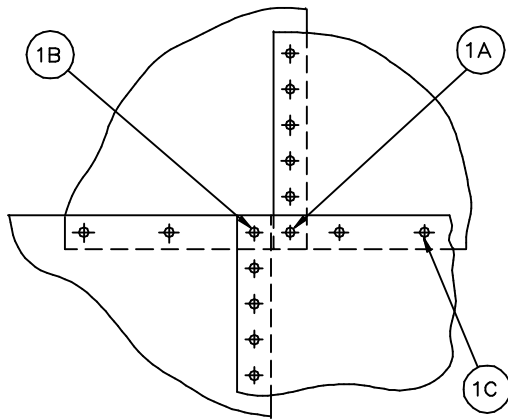
STRUCTURE BOLT LENGTHS FOR THIS CONSTRUCTION DETAIL ARE SPECIFIED IN THE PROJECT SUBMITTAL DOCUMENTATION FASTENER SCHEDULE AND ARE DEPENDENT UPON:

1. SHELL SHEET THICKNESS (SEE PROJECT SUBMITTAL DOCUMENTATION)
2. LADDER & PLATFORM BRACKET USAGE

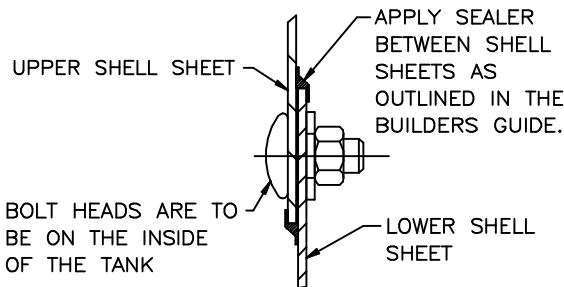
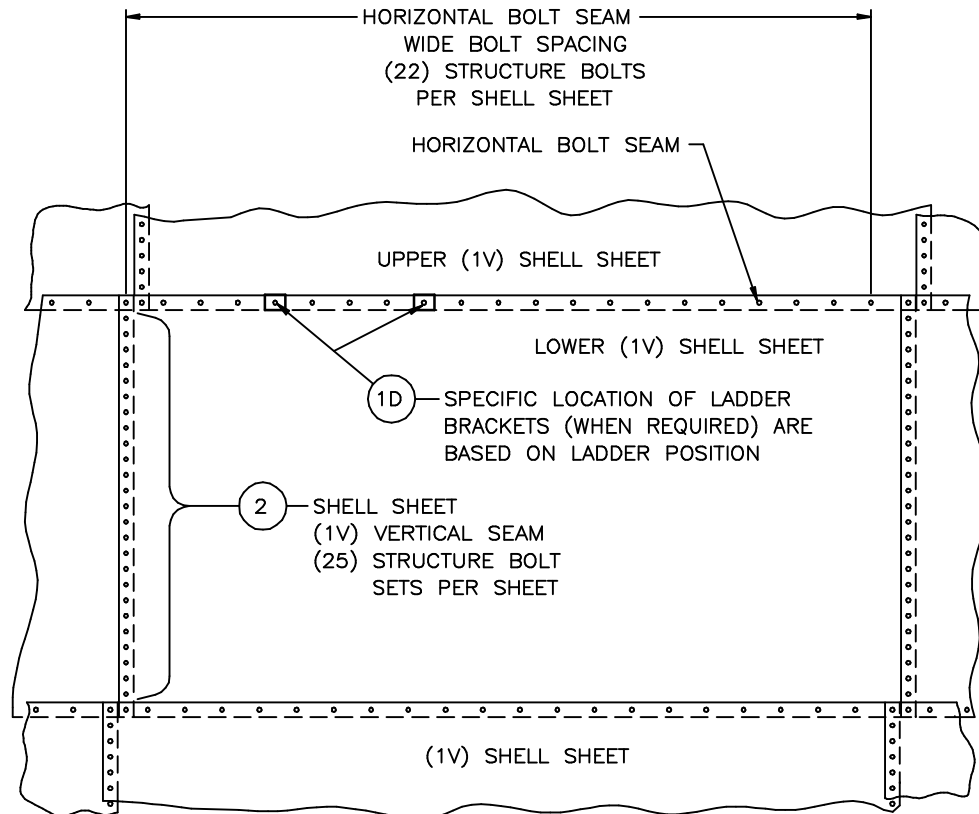
THE QUANTITY OF BOLT SETS (STRUCTURE BOLTS, WASHERS, AND NUTS) PER BOLT LENGTH IS BASED ON THE FOLLOWING:

1. HORIZONTAL BOLT SEAM TOTAL QUANTITY ----- 22 PER SHT. X NO. OF SHEETS  
 CONSISTING OF THE FOLLOWING JOINTS:
  - 1A. FOUR CORNER JOINT (3 SHEETS - 2 UPPER & 1 LOWER) ----- 1 PER SHT. X NO. OF SHEETS
  - 1B. FOUR CORNER JOINT (3 SHEETS - 1 UPPER & 2 LOWER) ----- 1 PER SHT. X NO. OF SHEETS
  - 1C. SHEET OVERLAP (2 SHEETS - 1 UPPER & 1 LOWER) ----- 20 PER SHT. X NO. OF SHEETS
  - 1D. LADDER / PLATFORM BRACKET ----- \* 1 PER BKT. X NO. OF BRACKETS

\* THIS QUANTITY TO BE SUBTRACTED FROM THE 1C SEAM TOTAL COUNT  
 SPECIFIC LOCATION OF THE LADDER / PLATFORM BRACKETS (WHEN REQUIRED) IS BASED ON SITE REQUIREMENTS. BRACKETS CANNOT BE AT A WEB TRUSS / SHELL SHEET JOINT.
2. VERTICAL BOLT SEAM QUANTITY (2 SHEETS) ----- 25 PER SHT. X NO. OF SHEETS



FOUR CORNER JOINT



SECTION THRU HORIZONTAL BOLT SEAM

REL	DESCRIPTION	ECN DR. BY
1	RELEASED FOR PRODUCTION	90034 RKK
2	REVISED COPYRIGHT STATEMENT; REVISED BOLT COUNT 1D	91149 DMN

**A.O. SMITH**  
**ENGINEERED STORAGE PRODUCTS COMPANY**  
 DEKALB, ILLINOIS 60115

**CONFIDENTIAL**  
 THIS DRAWING IS THE PROPRIETARY PROPERTY OF A.O. SMITH ENGINEERED STORAGE PRODUCTS COMPANY AND SHALL NOT BE USED NOR REPRODUCED WITHOUT THE EXPRESS WRITTEN CONSENT OF THE COMPANY.  
 AOSSEPC COPYRIGHT © 1998  
 ALL RIGHTS RESERVED

DRAWN BY DMN  
 DATE 08/14/91

CONSTRUCTION DETAIL  
 BOLT JOINTS (1V) & (1V)  
 SHELL SHEETS  
 WIDE BOLT SPACING  
 ALL TANK TYPES

DRWG NO. 261319