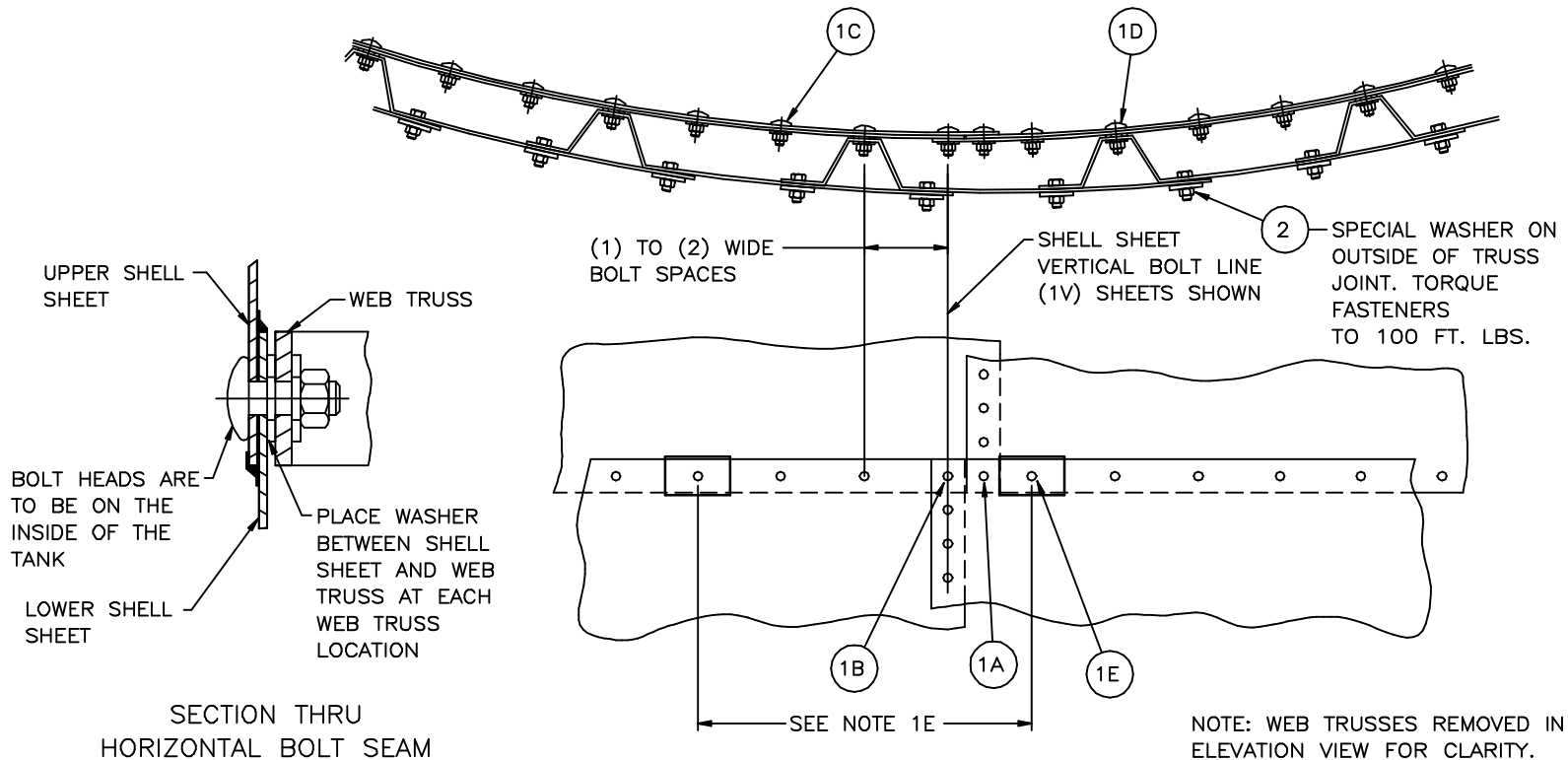


STRUCTURE BOLT LENGTHS FOR THIS CONSTRUCTION DETAIL ARE SPECIFIED IN THE PROJECT SUBMITTAL DOCUMENTATION FASTENER SCHEDULE AND ARE DEPENDENT UPON:

1. SHELL SHEET THICKNESS (SEE PROJECT SUBMITTAL DOCUMENTATION)
2. LADDER & PLATFORM BRACKET USAGE

THE QUANTITY OF BOLT SETS (STRUCTURE BOLTS, WASHERS, AND NUTS) PER BOLT LENGTH IS BASED ON THE FOLLOWING:

1. HORIZONTAL BOLT SEAM TOTAL QUANTITY ----- 22 PER SHT. X NO. OF SHEETS
CONSISTING OF THE FOLLOWING JOINTS:
 - 1A. FOUR CORNER JOINT (3 SHEETS, 2 UPPER & 1 LOWER) ----- SEE SHELL SHEET JOINT DETAILS
 - 1B. FOUR CORNER JOINT (3 SHEETS, 1 UPPER & 2 LOWER) ----- SEE SHELL SHEET JOINT DETAILS
 - 1C. SHEET OVERLAP (2 SHEETS, 1 UPPER & 1 LOWER)----- SEE SHELL SHEET JOINT DETAILS
 - 1D. WEB TRUSS/SHEET JOINT (1 TRUSS, 1 UPPER SHEET, 1 LOWER SHEET, & 1 WASHER)-- † 7 PER SHT. X NO. OF SHEETS
† THIS QUANTITY TO BE SUBTRACTED FROM SHEET OVERLAP (1C) COUNT
 - 1E. LADDER / PLATFORM BRACKET ----- * 1 PER BKT. X NO. OF BRACKETS
* THIS QUANTITY TO BE SUBTRACTED FROM THE 1C SEAM TOTAL COUNT
SPECIFIC LOCATION OF THE LADDER / PLATFORM BRACKETS (WHEN REQUIRED) IS BASED ON SITE REQUIREMENTS. BRACKETS CANNOT BE AT A WEB TRUSS / SHELL SHEET JOINT.
2. WEB TRUSS STIFFENER FASTENER, 1-1/4" LONG HHCS, SPCL WASHER, (2) TRUSS FLANGES --- 14 PER SHT. X NO. OF SHEETS



REL	DESCRIPTION	ECN DR. BY
3	REDRAWN; ADDED WASHER BETWEEN SHELL SHEET AND WEB TRUSS; REV. DESCRIPTION OF JOINT 1D	93152 DMN
4	REVISED TO USE ROUND WASHER INSTEAD OF HEX.	99211 10/26/99 DMA/

A.O. SMITH
ENGINEERED STORAGE PRODUCTS COMPANY
 DEKALB, ILLINOIS 60115

CONFIDENTIAL

THIS DRAWING IS THE PROPRIETARY PROPERTY OF A.O. SMITH ENGINEERED STORAGE PRODUCTS COMPANY AND SHALL NOT BE USED NOR REPRODUCED WITHOUT THE EXPRESS WRITTEN CONSENT OF THE COMPANY.
 AOSSEPC COPYRIGHT © 1998
 ALL RIGHTS RESERVED

DRAWN BY DMN
 DATE 09/15/93

CONSTRUCTION DETAIL
 3" WEB TRUSS
 INSTALLATION ONTO
 SHELL SHEET WITH
 WIDE BOLT SPACING
 HORIZONTAL BOLT LINE

DRWG NO. 261329