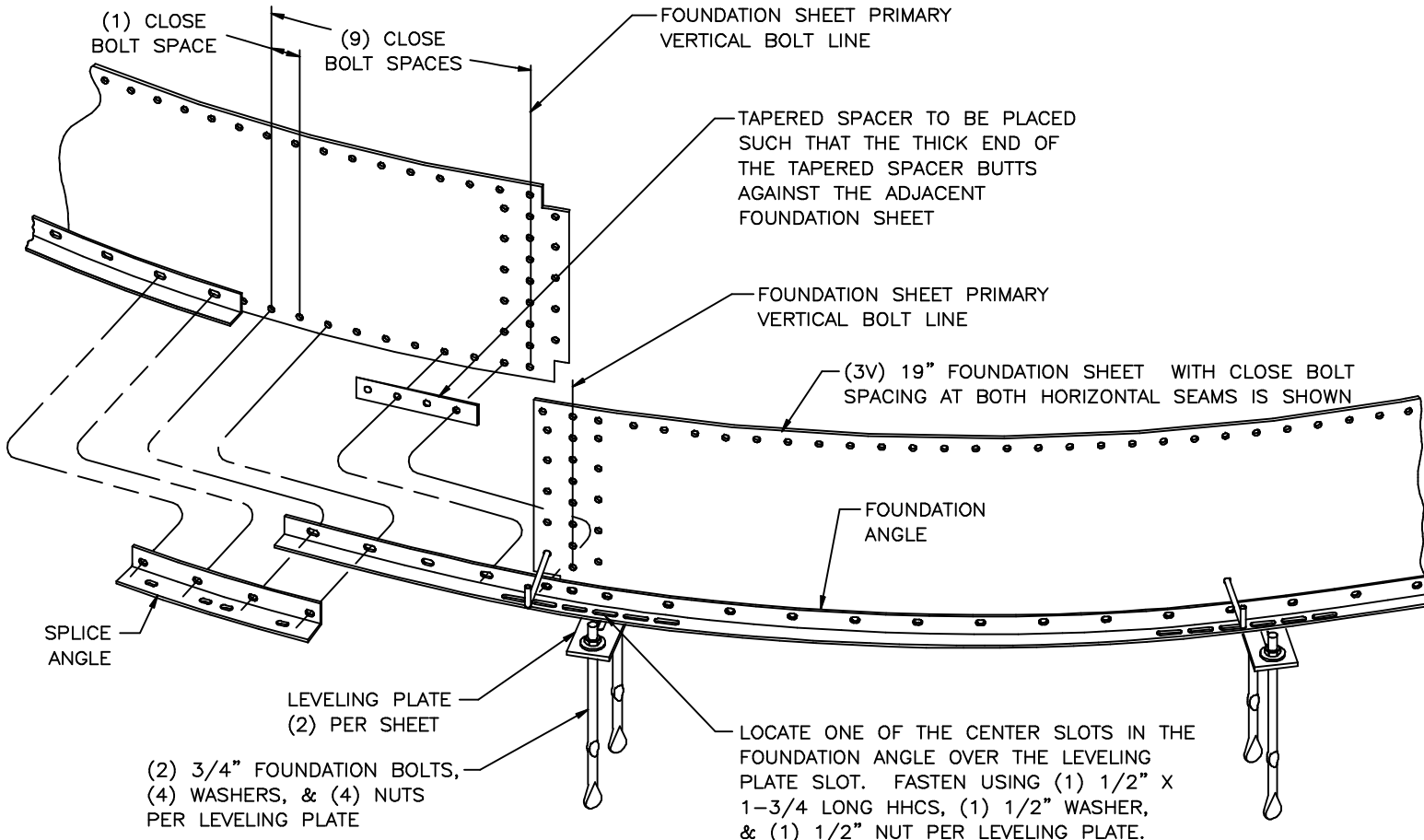


STRUCTURE BOLT COUNTS FOR THE FOUNDATION SHEET / FOUNDATION ANGLE HORIZONTAL SEAM AND THE FOUNDATION SHEET VERTICAL SEAM ARE SPECIFIED ON THE FOLLOWING CONSTRUCTION DETAIL FOUNDATION ASSEMBLY DRAWINGS.

261918 (3V) 19" FOUNDATION SHEET ASSEMBLY
 261919 (4V) 19" FOUNDATION SHEET ASSEMBLY

19" FOUNDATION SHEET VARIABLES ARE AS FOLLOWS:

1. (3V) CLOSE BOLT SPACING AT BOTH HORIZONTAL SEAMS
2. (3V) WIDE BOLT SPACING AT TOP HORIZONTAL SEAM AND CLOSE BOLT SPACING AT THE BOTTOM HORIZONTAL SEAM
3. (4V) CLOSE BOLT SPACING AT BOTH HORIZONTAL SEAMS
4. (4V) WIDE BOLT SPACING AT THE TOP HORIZONTAL SEAM AND CLOSE BOLT SPACING AT THE BOTTOM HORIZONTAL SEAM



REL	DESCRIPTION	ECN DR. BY
1	RELEASED FOR PRODUCTION	90034 DMN
2	REVISED COPYRIGHT STATEMENT; REMOVED BOLT COUNTS AND DIRECTED THE USER TO APPROPRIATE DRAWINGS WITH THE CORRECTED COUNTS	91149 DMN
3	ADDED ANCHOR ROD SETS PER LATEST FOUNDATION DESIGN	96082 RKK 3-96
4	REVISED ANCHOR ROD SETS PER LATEST FOUNDATION DESIGN	99226 TAK 11-99
<p>A.O. SMITH ENGINEERED STORAGE PRODUCTS COMPANY DEKALB, ILLINOIS 60115</p> <p>CONFIDENTIAL THIS DRAWING IS THE PROPRIETARY PROPERTY OF A.O. SMITH ENGINEERED STORAGE PRODUCTS COMPANY AND SHALL NOT BE USED NOR REPRODUCED WITHOUT THE EXPRESS WRITTEN CONSENT OF THE COMPANY. AOSESPC COPYRIGHT © 1998 ALL RIGHTS RESERVED</p>		
DRAWN BY DMN		DATE 08/20/91
<p>CONSTRUCTION DETAIL 19" FOUNDATION GENERAL ASSEMBLY</p> <p>SHORT STARTER CONCRETE FOUNDATION</p>		
DRWG NO.	261344	